

## WA State Legislative Session UPDATE from WA Low Income Housing Alliance

Tell Your Lawmakers:

"Do everything you can for housing before you leave Olympia!"

The clock is ticking, and lawmakers have less than two weeks left to pass a final budget. Let your elected official know that you want them to stay and fight the good fight. Don't go home without doing everything you can for housing!

Make sure the final budget invests at least \$100 million in affordable housing, with \$80 million for the Housing Trust Fund.

- Pass HB 2263, and give local communities the tools they need to address critical affordable housing and mental health needs.
- Hold the line on the safety net, and ensure that the final budget fully protects Housing and Essential Needs (HEN) and the Aged, Blind, and Disabled (ABD) programs.
- End the budget deficit cycle, and set Washington on a path to a sustainable state budget by enacting new revenue.

### ➔ Washington State Budget & Policy Center: State Budget

#### 06-23-2015: Shutdown Threats Don't Have to Become New Normal

With just one week left for the Legislature to pass a budget, preparations are underway for a full or partial shutdown of state services that would harm tens of thousands of Washingtonians. Today, more than 25,000 employees are receiving furlough notices – just as they did two years ago when our state was in the same situation. Unless lawmakers agree on long-term, sustainable revenue solutions, these kinds of biennial shutdown threats are likely to become the norm. If they have the foresight and vision to take the long view in their budget decision-making, though, they can prevent that from happening.

Into their second special session, the House and Senate remain at odds over investment priorities for the next budget cycle, which begins on July 1st, and how to pay for essential state services – from education to public safety – that benefit all Washingtonians.

A shutdown of public services would spell widespread disruption in the commerce and productivity of the state. And it would put the health and safety of Washingtonians in jeopardy across all 49 legislative districts (see table).

Control + Click on Table for Impacts on People ➔

IMPACT OF WASHINGTON STATE SHUTDOWN BY LEGISLATIVE DISTRICT						
Legislative District	Individuals no longer receiving Aged, Blind, & Disabled assistance <sup>1</sup>	Adults & Children no longer receiving Diversion Cash Assistance <sup>2</sup>	Adults & children no longer receiving Family Support Services <sup>3</sup>	Women no longer receiving Program Women Assistance <sup>4</sup>	Individuals no longer receiving Vocational Rehabilitation Services <sup>5</sup>	Parents no longer receiving Working Connections Child Care <sup>6</sup>
<b>STATE TOTAL</b>	<b>40,673</b>	<b>9,359</b>	<b>15,297</b>	<b>390</b>	<b>21,067</b>	<b>46,541</b>
1 <sup>st</sup>	478	36	113	0	349	363
2 <sup>nd</sup>	639	242	292	5	333	866
3 <sup>rd</sup>	2,219	661	1,110	24	758	1,817
4 <sup>th</sup>	911	496	449	6	383	1,255
5 <sup>th</sup>	376	27	80	2	239	321
6 <sup>th</sup>	697	310	334	9	368	984
7 <sup>th</sup>	971	121	529	8	369	636
8 <sup>th</sup>	917	162	205	2	546	1,161
9 <sup>th</sup>	448	98	280	2	321	976
10 <sup>th</sup>	619	98	211	3	361	600

Just a few of the many services that would be ended or scaled back:

- Students at public universities and community colleges will not have access to state financial aid programs for fall enrollment.
- All state parks will close before the Independence Day holiday weekend.
- Licensing activities for some businesses will be suspended, such as real estate brokers and appraisers, architects, cosmetologists, and employment agencies.
- Parents with low incomes will stop receiving Working Connections Child Care services that help them remain in the workforce.

Amid the urgency to pass a budget and avoid a shutdown, lawmakers should not rush to piecemeal, short-term patches. Instead, they should implement real, long-lasting solutions to sustain our children's education, keep essential state services stable over the long haul, and invest in the important building blocks of a strong economy. To do that, they should not only adopt the House's proposal to close tax breaks to generate additional revenue, but they should also revive the capital gains tax proposal.

They have the opportunity to use the budget to secure the economic strength and progress of our state and its residents over the next five, 10, 50-plus years. (Our [Progress Index](#) provides a roadmap for just how they can do that.) If they focus on how they can truly invest in our state and its people, think of the kind of state they could help create. At the very least, think how nice it would be if hardworking Washingtonians didn't have to face the threat of a government shutdown every two years.

### **06-23-2015: House Nixes Best Plan for Sustainable, Equitable Revenue**

Yesterday the House released its third iteration of a spending plan for the next two years, attempting once again to reach a compromise with the Senate. The plan puts an end to Washington state's best chance for a sustainable budget and equitable tax system: the capital gains tax.

In lieu of a capital gains tax proposal, the House put out a budget with no additional revenue alongside a proposal (House Bill 2269) to close or narrow six tax breaks, raising \$356 million. The new revenue from HB 2269 is specifically dedicated to education and other services.

**House Bill 2269 would close or narrow six wasteful tax breaks; create a more level playing field for Washington-based businesses; increase penalties and administrative actions for businesses that fail to pay their taxes on time; and invest the revenue in education and other services.**

The new budget, combined with the additional investments in HB 2269, invests about \$300 million *less* than the budget put forward by the House several weeks ago.

Compared to [the budget proposed on June 1st](#), the new proposals backslide on important investments. For example, fewer children will be able to attend preschool; fewer students will get financial aid to go to college; and adults and children will have a harder time accessing health care through Medicaid and the Children's Health Insurance Program because staff investments in those programs have been pared down. The list goes on.

New revenue is a must for making the budget sustainable and responsible. While the House has moved closer to the Senate's version of the budget, the Senate remains rigidly opposed to new revenue.

The new House proposal to close wasteful tax breaks demonstrates the need to prioritize state resources for our kids and students. Without a capital gains tax, however, we can only get so far. Lawmakers should not abandon a capital gains tax, as it is a sensible and much-needed tool to raise long-term revenue and begin to even out our unbalanced tax system.

Read our full analysis on <http://hosted.verticalresponse.com/851057/afc4cabb98/1330173141/0151fa9b3e/>

## ➔ **Changes to Access Point for Housing [AP4H] – Pierce County Community Connections**

This is an update regarding a few interim changes at Access Point for Housing (AP4H) with the goal of improving the client experience. **HIGHLIGHTS INCLUDE:**

- **SIGNIFICANT REDUCTION TO THE CURRENT SCREENING AND ASSESSMENT PROCESS**
- **IMPACT OF THE CHANGE FOR HOUSING PROVIDERS:**
  - *Less tailored referrals*
  - *Provider responsibility to capture client history*
- **AP4H OPERATING FROM VARIOUS LOCATIONS THROUGHOUT THE COUNTY**

As you may remember from our Community Meeting held in February, I shared that the County is working toward improving our Centralized Intake System by implementing a series of recommendations by Focus Strategies, a national consulting firm hired by the County. One of the main recommendations was about the assessment and referral process. Namely, in order to be more effective, we need to not only reduce the screening and assessment time, but we also need to triage households so that those with the highest need are prioritized for housing.

### **Significant Reduction to the Current Screening and Assessment Process**

The County has been diligently working toward this end in concert with Focus Strategies and a community-based work group. While we are still in the process of developing prioritization criteria and planning for implementation into our system, **in the interim we have been able to significantly reduce the current screening and assessment process at AP4H. AP4H has successfully reduced the screening and assessment questions to only those that either match a client to a program or are required by federal and/or state funders.**

While we still have quite a bit of work in front of us, we see this step as a success. Reducing the assessment time means that AP4H staff are able to screen and assess more clients in the same amount of time, resulting in increased referrals and, ultimately, more clients permanently housed. This step represents a win for both households and the system.

### **Impact of the Change for Housing Providers**

***What will this mean for you as a housing provider?*** We anticipate a few immediate implications. With the removal of the 90 minute strength-based assessment at AP4H, clients will be sharing less information upfront. First, this will certainly impact referrals, as AP4H will have less supplemental information to draw from to tailor their referrals to provider agencies. Though this function was well-intentioned when implemented, it has actually served to weaken the flexibility of our system to serve, as AP4H is forced to cater to program eligibility rules and withhold otherwise potential referrals.

**It is the County's expectation that if a fund source will allow your program to serve a household, then the household will be served.** Our goal as a system is to screen in, not to screen out. Therefore, you should anticipate that referrals may now include households that are "harder to house." Remember, once our system implements prioritization, all referrals will be for the highest need households. This change now is only a preview of what is to come, **so this is a good opportunity to begin practicing serving the high barrier households.**

Secondly, without the strength-based assessment delivered in advance, the responsibility to gather relevant client history will now exclusively rest with Housing Providers. This shift aligns with the feedback we've heard from providers that program staff are often re-assessing clients because it can take so long from the original AP4H assessment to referral. It also creates a natural opportunity to build trust with client and reduces client trauma of telling and re-telling their story. We are moving toward a system that strives to ask the right question at the right time. This adjustment supports not only what works best for the system as a whole, but for Housing Providers and clients individually as well.

### **AP4H Operating from Various Locations**

In addition to reducing the screening and assessment, we are excited to announce that **AP4H will now be operating from various locations throughout the County** in an effort to be more accessible to clients and reduce transportation burdens. **Clients can access centralized intake at the following locations NOW:**

**AP4H NEW LOCATIONS****Same PHONE: 253.682.3401**

Weekday	Location and Time
Monday	Adams Street Family Campus 8:30am-5pm TACID 8:30am-5pm REACH 8:30am-12pm New Nativity House 4pm-8pm
Tuesday	MDC 8:30am-5pm New Nativity House 4pm-8pm Salvation Army 8:30am-5pm Associated Ministries Lakewood office 8:30am-5pm
Wednesday	Associated Ministries 9am-3pm
Thursday	St Francis House 8:30am-5pm Reach 11am-3pm Rescue Mission's Men Shelter 4pm-8pm Oasis 3pm-7pm
Friday	Rescue Mission's Men Shelter 4pm-8pm Sumner Family Center 8:30am-12:30pm New Hope Day Shelter 12pm-5pm (Beginning June 19)

Pierce County Community Connections is excited about these changes and believe they will support our goal of making homelessness rare, brief, and one time. If you have any questions please contact Anne Marie Edmunds at [achampo@co.pierce.wa.us](mailto:achampo@co.pierce.wa.us) or 253-798-4361.

### → Tacoma Wins VISION 2040 Award

PSRC – Tacoma has won a 2015 VISION 2040 Award from the Puget Sound Regional Council for its Regional Growth Center plan. The awards recognize innovative projects and programs that help ensure a sustainable future as the region grows.

The Downtown Tacoma Regional Growth Center Plan is a compilation of the subarea plans and planned action environmental work for the Hilltop, South Downtown and North Downtown neighborhoods. The plan has led to increased grant funding, revitalized development, and helped Sound Transit and Amtrak locate efficiently.

"Strong center planning is crucial to the success of the region. It is the backbone of achieving mobility with growth, using our resources wisely, and developing a sense of place," said Josh Brown, Executive Director of the Puget Sound Regional Council.

### → TCRA Funding Application

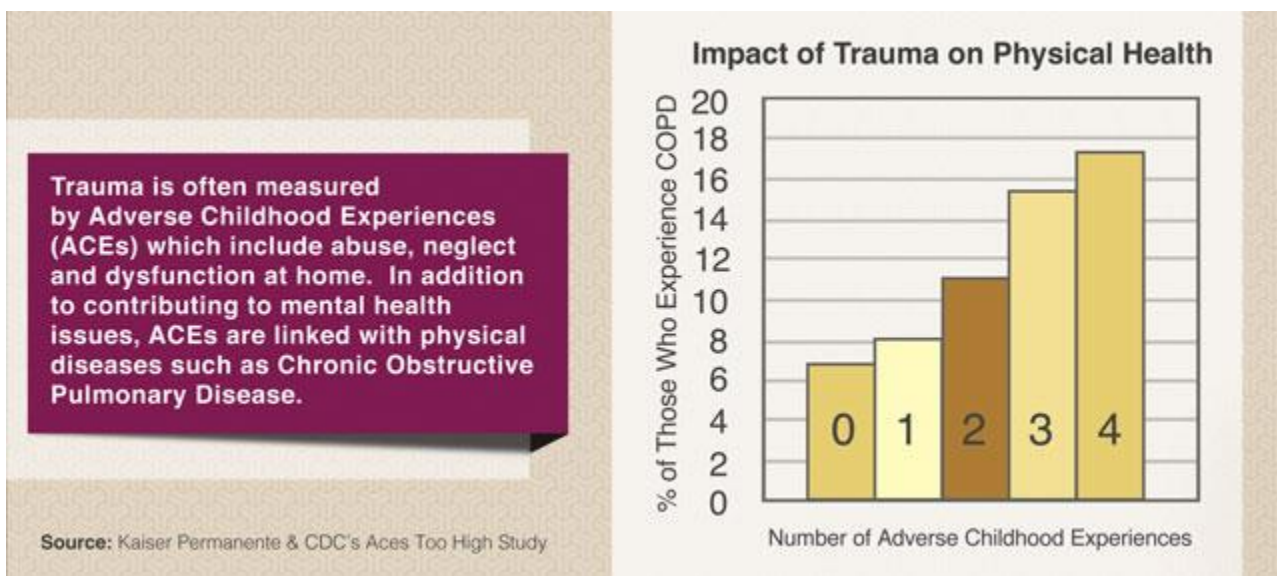
Please find instructions and application for 2015 HOME funds: [www.cityoftacoma.org/affordablehousing](http://www.cityoftacoma.org/affordablehousing) ...Funding Opportunities. The Notice of Funding Available (NOFA) Instructions cover both rental and homeownership programs. There is, however, a different application for homeownership programs. Rental applications should submit completed documents, as well as any supporting documents outlined in the instructions or application: Tacoma 2015 Application, Tacoma CFA 2015 Addendum and Combined Funders Forms 2015. Homeownership applicants should submit completed documents, as well as any supporting documents outlined in the instructions or applications: Homeowner Application 2015 and Homeowner Workbook 2015. Applications are due on Friday, June 26, 2015.

## → Trauma Informed Care – Mark Pereboom, MDC

At MDC, we interact every day with individuals who have experienced trauma. It is a pervasive and salient factor in the lives of most individuals with mental health issues. While trauma is most often recognized as instances of interpersonal violence and abuse, it can take on many forms. Individuals dealing with chronic adversity such as poverty and oppression are certainly victims of trauma. Additionally, an individual belonging to a historically traumatized group (based on race, religion, etc.) may experience symptoms of a post-traumatic response, even if they were not directly involved. This is called historical trauma, and refers to the tendency of psychological wounds to be transferred across the generations.

Even with the best intentions, mental health treatment can be re-traumatizing if it is done without consideration of past experiences. An unaware clinician can inadvertently ignore or stigmatize crucial experiences, or perpetuate systems of oppression. For this reason, it is crucial that mental health agencies, like MDC, adopt a trauma-informed approach to care.

The prevalence of trauma among those who suffer from mental health issues is astounding - most estimates place rates above 90 percent. Trauma is also linked to physical health concerns, as seen in the graph below. The trauma-informed care approach to treatment was born of this reality. It provides mental health, substance use & even medical treatment approaches with the assumption that every client who walks through the door has been a victim of trauma in their lives.



## → Out of Reach WA 2015

Out of Reach 2015 shows how difficult it is for renters in Washington State to afford rents.

WA is 10<sup>th</sup> highest housing wage required: \$21.69/hr. Go to <http://nilhc.org/oor/washington>

## → Nonprofit Newswire

[http://portal.hud.gov/hudportal/HUD?src=/program\\_offices/housing/sfh/hcc/hcc\\_home](http://portal.hud.gov/hudportal/HUD?src=/program_offices/housing/sfh/hcc/hcc_home)

## → Funding approval for special needs transportation in King, Pierce, Snohomish, Kitsap

The Puget Sound Regional Council has approved funding for 20 projects that help people with disabilities, older adults, youth, and low-income people get around more easily.

The projects will receive \$7.6 million from PSRC and the Washington State Department of Transportation's coordinated grant programs. The full list of projects can be found here:

<http://www.psrc.org/assets/12556/2015CoordinatedGrantProjectAwards.pdf>

Some of the projects moving forward include:

**Northshore Senior Center** will replace two aging, ADA-accessible minibuses and continue existing transportation service to seniors and people with disabilities in south Snohomish County and north King County. The service crosses county and transit agency boundaries, providing seamless trips for riders.

**Beyond the Borders** is continuing its **Pierce County Community Connections** transportation service for special needs populations living outside of the Pierce Transit service area. Beyond the Borders provides service to areas of Pierce County where transportation services are unavailable or insufficient to meet the needs of seniors and people with disabilities.

**Mobility Management: Hopelink** received two grants for short-range planning and management activities and improving coordination among transportation providers. One of the grants will help develop a coordinated emergency response that addresses vulnerable populations. Hopelink serves people in north and east King County.

The **Key Peninsula School Bus Connects** project received \$150,000 to sustain and extend service connecting the Key Peninsula to Purdy Park and Ride.

## →EVENTS

- **AHC Affordable Housing Candidate Forum – City Council Races in Pierce County**  
September **10 or 17 [to be determined]** 4:30 – 6:30 Location **TBD**
- **AHC Excellence in Affordable Housing Awards**  
October 22, 5 – 7 Foss Waterway Seaport, 705 Dock Street, Tacoma 98402  
Nominate a person, organization, or group for an Affordable Housing Award in:  
**Advocacy, Community Impact, Innovation, or Sustainability**  
<http://www.affordablehousingconsortium.org/client/assets/files/events/2015%20Award%20Nomination%20FORM.pdf>

## → Housing-related job openings

Catholic Community Services: Operations Manager, Nativity House, Tacoma

**Application Procedure:** Please go to <https://careers-ccsww.icims.com/> to submit your resume, cover letter and application for this position

## → Economy

**Employment Extravaganza - Elliot Eisenberg, PhD**

May's employment data was excellent! Payrolls rose by 280,000, upward revisions were made to prior months, and because the labor force participation rate grew 0.1% for the second month in a row, the unemployment rate increase from 5.4% to 5.5% is good. Moreover, average hourly earnings were up 2.3% year-over-year, continuing their slow rise and their best year-over-year gain by a nose since 10/09. September rate rise, here we come!

## → Nominate Someone Exceptional! 2015 FRIEND OF HOUSING AWARDS

**Do you know an individual or organization doing exceptional work in affordable housing?**

Each year, the Washington State Housing Finance Commission honors individuals and organizations throughout Washington for their contributions in providing affordable housing to lower- and moderate-income residents of Washington. **NOMINATIONS DUE JULY 31**

**Learn more about the awards and nominate someone!**

[Friend of Housing Awards](#) [Margaret M. Sevy Lifetime Achievement Award](#)

**Deadline for nominations is July 31, 2015.** Awards will be announced on October 6, 2015, during the [Housing Washington 2015](#) conference in Spokane, Washington.